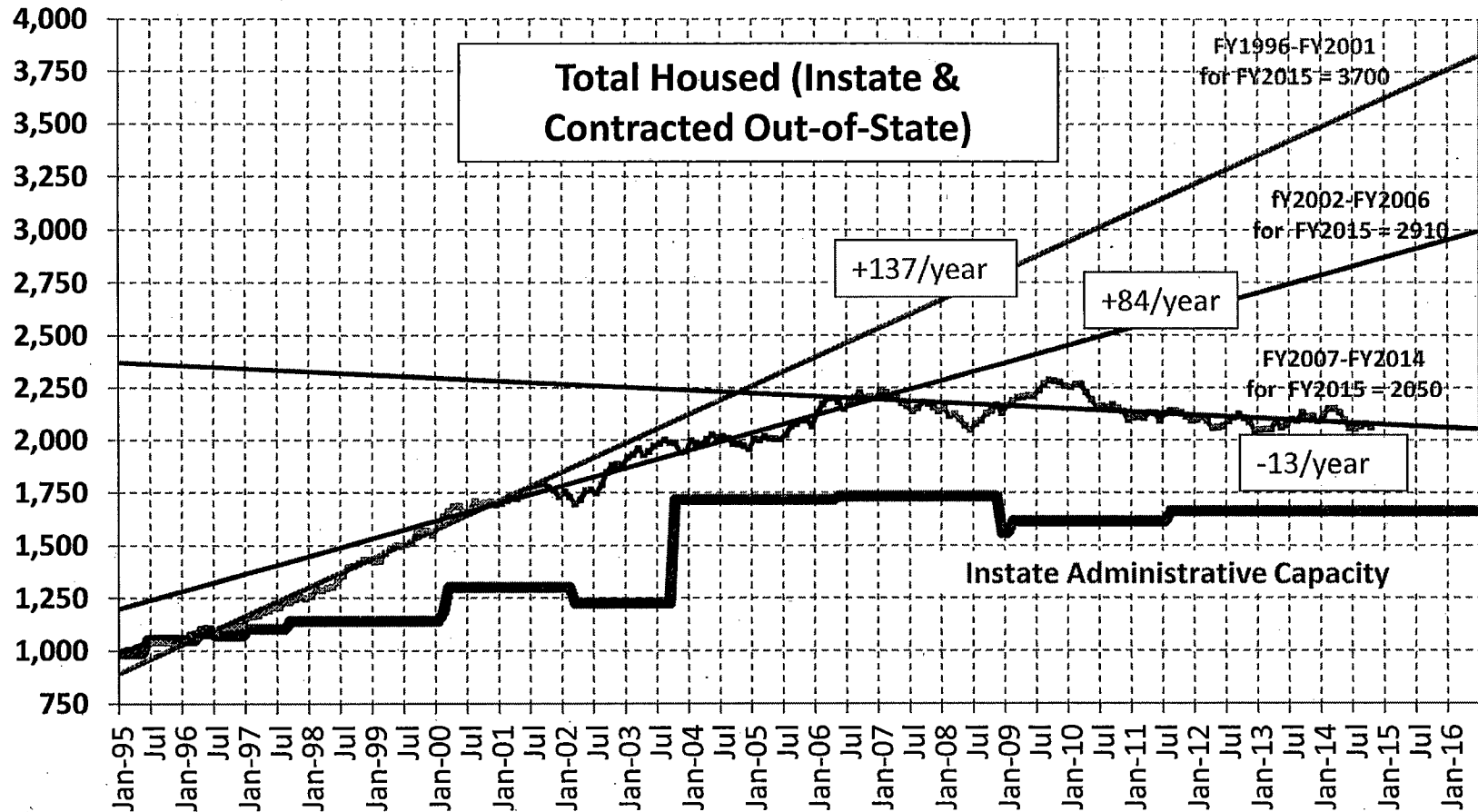


Long term Incarcerated Population Trends

The Changing of Growth Problem

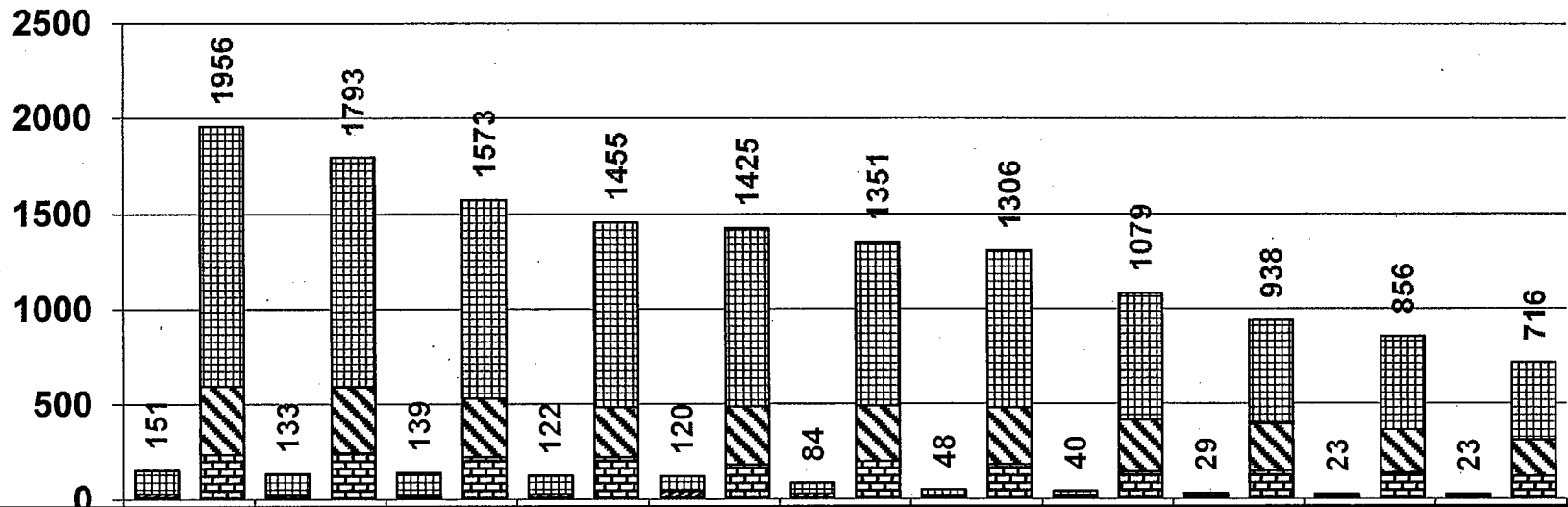


Source: VTDOC Population Statistics (Popstat). Note: "Total Housed" includes sentenced and/or detained offenders housed either in Vermont or out-of-state under Vermont jurisdiction.

Youths & Young Adults in Corrections

Youth (under 18) & Young Adults (18-21) - June 30th each year

▣ Youth-Incarcerated ▣ Youth-High ▣ Youth-Low ▣ Y.Adult-Incarcerated ▣ Y.Adult-High ▣ Y.Adult-Low

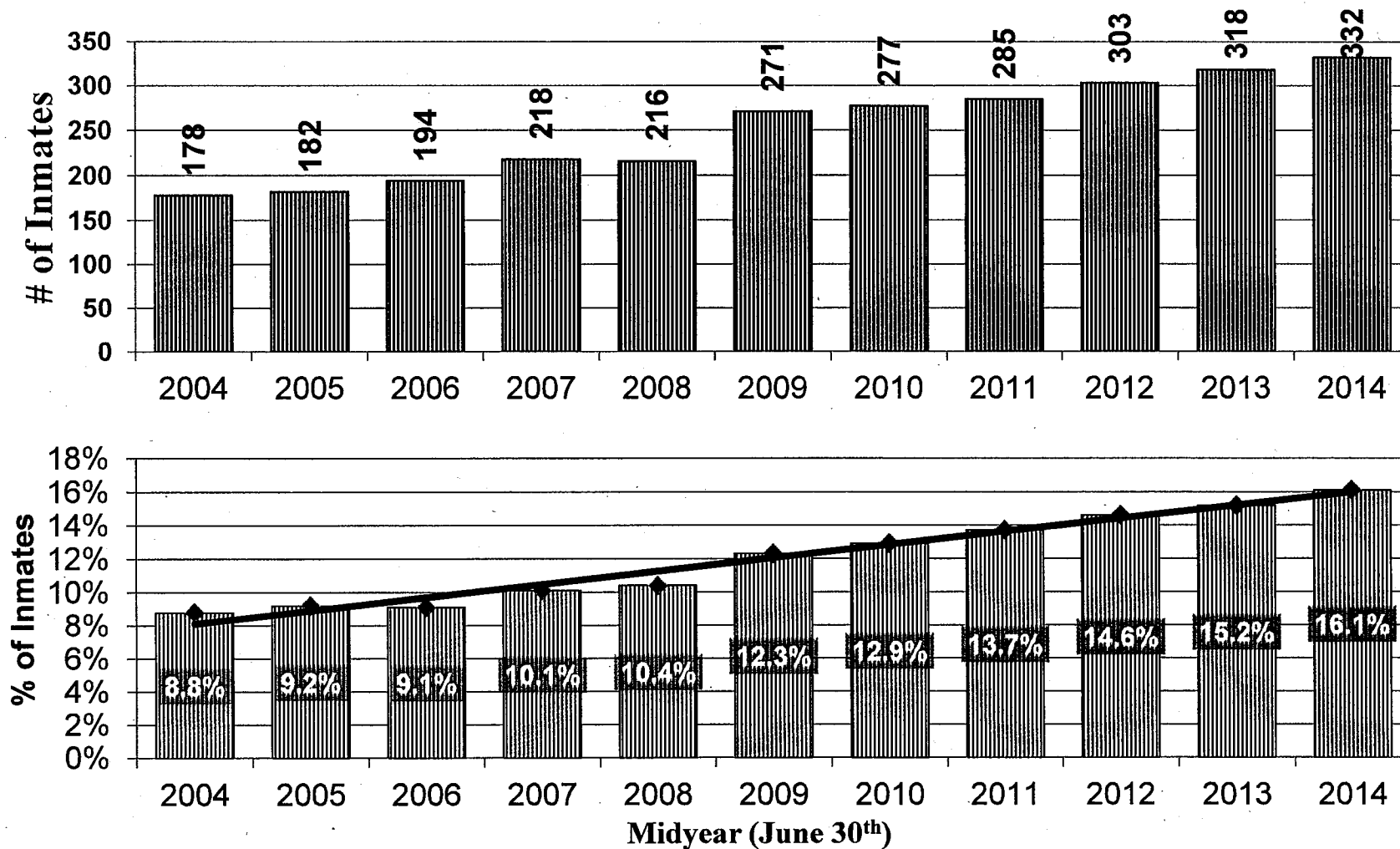


	Jun-04	Jun-05	Jun-06	Jun-07	Jun-08	Jun-09	Jun-10	Jun-11	Jun-12	Jun-13	Jun-14
Youth-Incarcerated	7	4	5	6	8	4	3	4			
Youth-High Field	21	17	14	19	33	21	11	10	9	6	6
Youth-Low Field	123	112	120	97	79	59	34	26	19	16	16
Young Adult-Incarcerated	236	243	221	221	179	197	180	140	145	135	117
Young Adult-High Field	360	349	308	264	307	292	300	273	248	228	190
Young Adult-Low Field	1360	1201	1044	970	939	862	826	666	545	493	409

Source: VTDOC Daily Snapshot (June 30th). A person was only counted once in the most restrictive placement (i.e. "Incarcerated" over "High field supervision" over "Low field supervision").

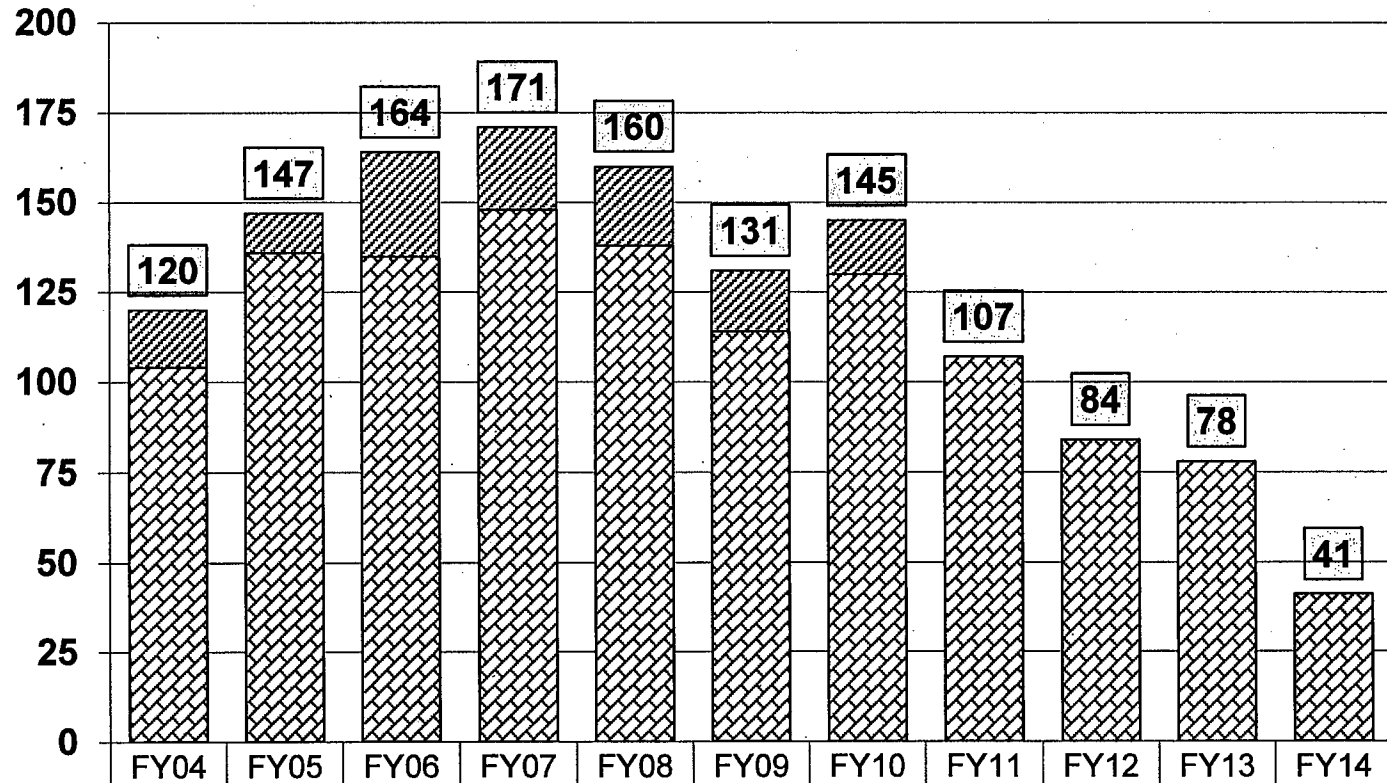
Inmates 50 Years of Age or Older

June 30th each year



Source: VTDOC Daily Snapshot (June 30th each year).

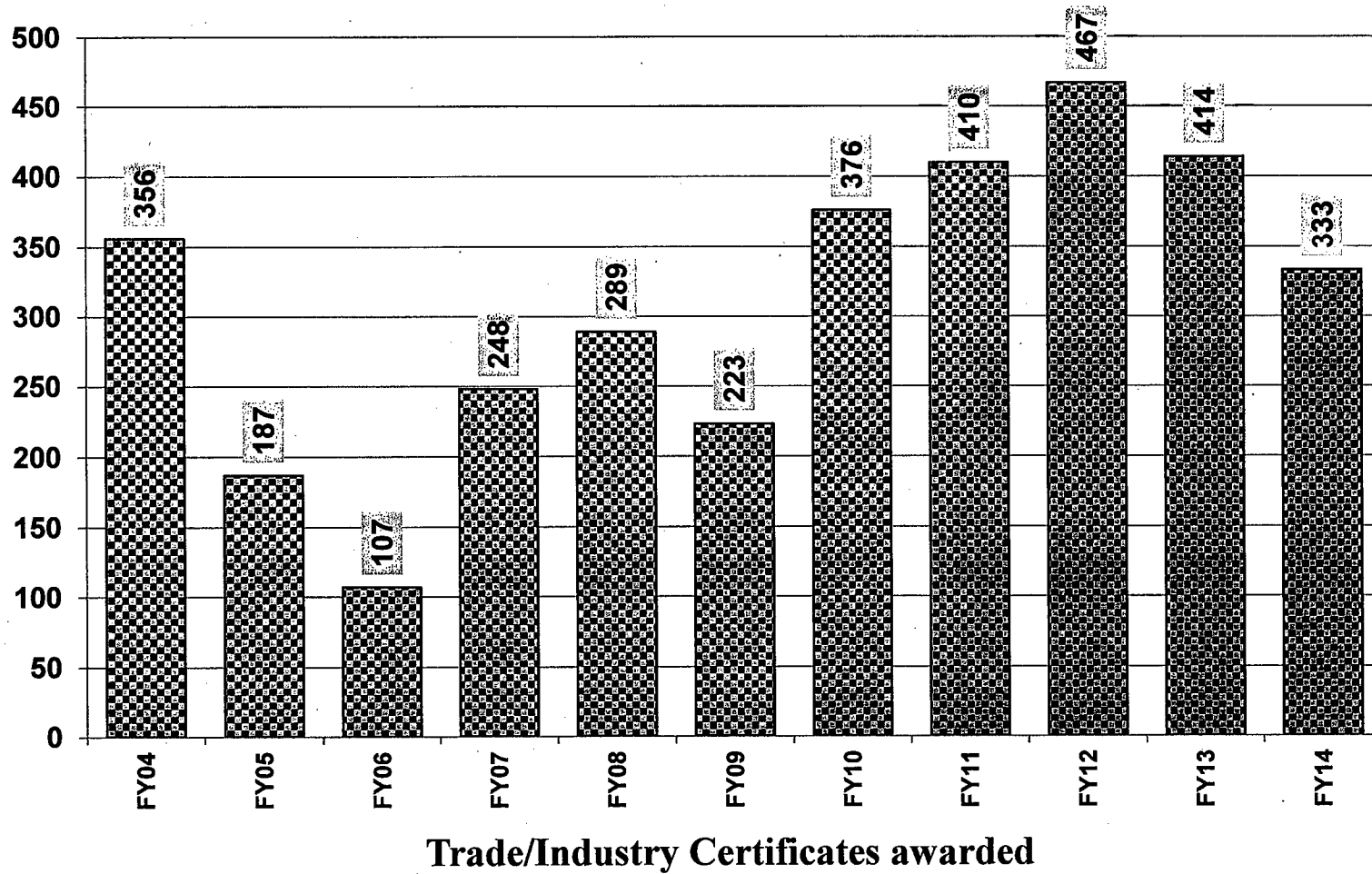
Education Certificates GEDs and Diplomas



▣ GED Certificates	16	11	29	23	22	17	15				
▣ High School Diplomas	104	136	135	148	138	114	130	107	84	78	41
Total	120	147	164	171	160	131	145	107	84	78	41

Source: Community High School of Vermont, Annual Reports. After FY2010, GED certificates are no longer issued through CHSVT.

Awarding Trade/Industry Certificates VTDOC/Education, Statewide



Source: Community High School of Vermont, Annual Reports.

Agency of Human Services
Department of Corrections
Fiscal Year 2016 Governor's Budget Presentation

- **Global Commitment Adjustments: Net = \$31,990**
 - **Medicaid Rate Increase: \$31,990**
 - ✓ FY16 2.5% Bump (6 months)

- **Special/Internal Service/Interdepartmental Transfer Fund Adjustments: <\$1,610,370>**
 - **Education: <\$2,045,564>**
 - ✓ Reduction in scope of the CHSVT program to select facilities - <\$1,957,928>
 - ✓ Employee Salaries and Fringe Benefit Rate Base (Retirement, Health, Dental, LTD, Life, FICA/Medicare): \$219,238 Education Fund, <\$306,874> IDT Fund
 - **Recreation: Employee Salaries and Fringe Benefit Rate Base (Retirement, Health, Dental, LTD, Life, FICA/Medicare): \$30,495**
 - **VOWP: Employee Salaries and Fringe Benefit Rate Base (Retirement, Health, Dental, LTD, Life, FICA/Medicare): \$97,825**

- **Additional items:**
 - CoSA and Community-based reentry services losing federal support after 09/30/2015. Without replacement funding, the Community Justice Centers will not be able to provide a consistent statewide set of reentry services.

§ 120. Department of Corrections education program; independent school

(a) Authority. An education program is established within the Department of Corrections for the education of persons who have not completed secondary education and who are committed to the custody of the Commissioner.

(b) Applicability of education provisions. The education program shall be approved by the State Board of Education as an independent school under 16 V.S.A. § 166, shall comply with the school quality standards provided by 16 V.S.A. § 165, and shall be coordinated with adult education, special education, and career technical education.

(c) Program supervision. The Commissioner of Corrections shall appoint a Director of Corrections Education, who shall be licensed as an administrator under 16 V.S.A. chapter 51, to serve as the Superintendent of the Community High School of Vermont and coordinate use of other education programs by persons under the supervision of the Commissioner.

(d) Curriculum. The education program shall offer a minimum course of study, as defined in 16 V.S.A. § 906, and special education programs as required in 16 V.S.A. chapter 101 at each correctional facility and Department service center, but is not required to offer a driver training course or a physical educational course.

(e) [Repealed.]

(f) Reimbursement payments. The provision of 16 V.S.A. § 4012, relating to payment for State-placed students, shall not apply to the Corrections education program.

(g) [Repealed.]

(h) Required participation. All persons under the custody of the Commissioner who are under the age of 23 and have not received a high school diploma shall participate in an education program unless exempted by the Commissioner.

Amendment:

(d) Curriculum. The education program shall offer a minimum course of study, as defined in 16 V.S.A. § 906, and special education programs as required in 16 V.S.A. chapter 101 in at least of one correctional facility in which female inmates are incarcerated and one correctional facility in which male inmates are incarcerated, but is not required to offer a driver training course or a physical educational course.